



Additel Corporation  
2900 Saturn Street #B  
Brea, CA 92821, USA  
Tel: (714) 998-6899  
Fax: (714) 998-6999

## Updating Additel 761 Firmware

Requirements and Equipment.....	1
Setting Up for the Firmware Update.....	2
Performing the Firmware Update .....	5
Contact Us .....	7



## Requirements and Equipment

**You will need the following in order to upgrade your unit's firmware:**

1. A Windows computer.
2. The unit you are performing the firmware update on.
3. RS232 to USB Cable – This cable will connect your unit to the computer. The RS232 port has 9 pins. Don't buy a cheap cable – there is a chance some of the pins will not work, in which case, your cable will not work for upgrading firmware.



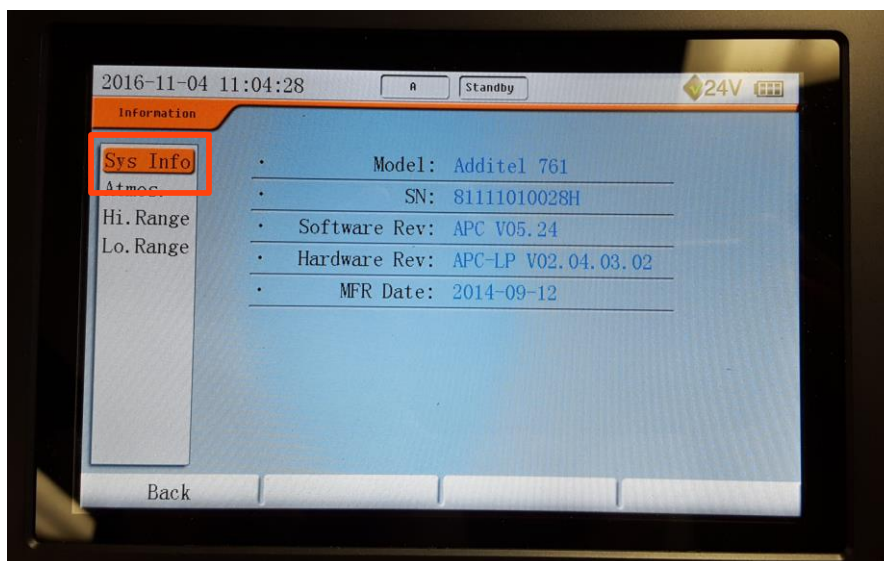
4. You may need the power cord – you should not use the charging cord while performing the firmware update, but if your unit is low, you should charge it before performing the update. This will ensure the update process isn't interrupted.

## Setting Up for the Firmware Update

1. First we need to copy down the unit information first. If your unit is a 761, press the 'Setup' button and then navigate to 'Information'. In the menu, as shown to the right.



Press the 'Enter' button and copy down all the information that appears in the 'System Information' tab as shown below.



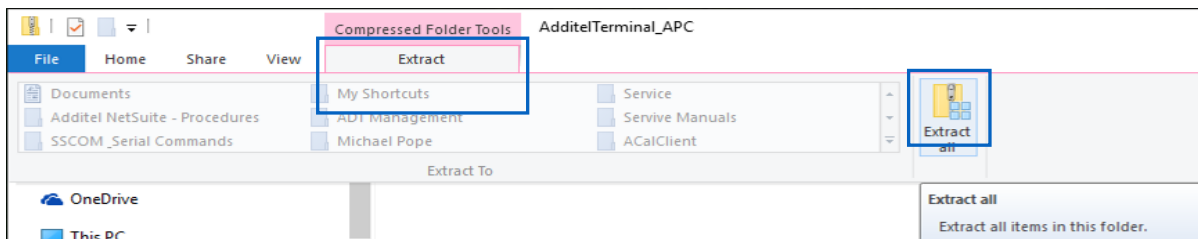
2. Connect your unit to your computer using the RS232 to USB cable. (Your unit may not be the unit in the pictures below, but it should have a RS232 Port).



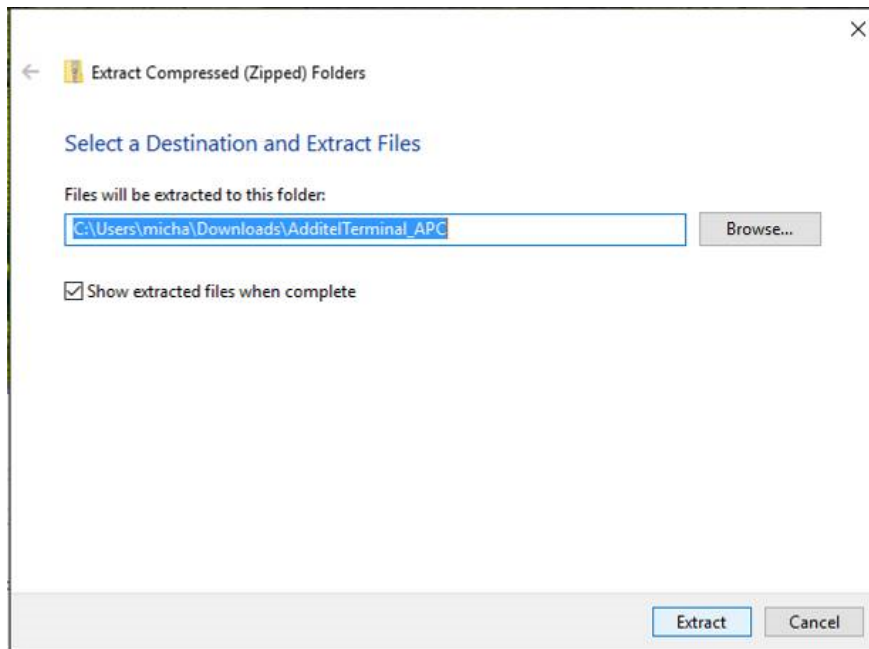
3. Next, we need to download the Firmware Update. Please download the software for your unit from the following link:

[http://www.additel.com/downloads/terminal/AdditelTerminal\\_APC.zip](http://www.additel.com/downloads/terminal/AdditelTerminal_APC.zip)

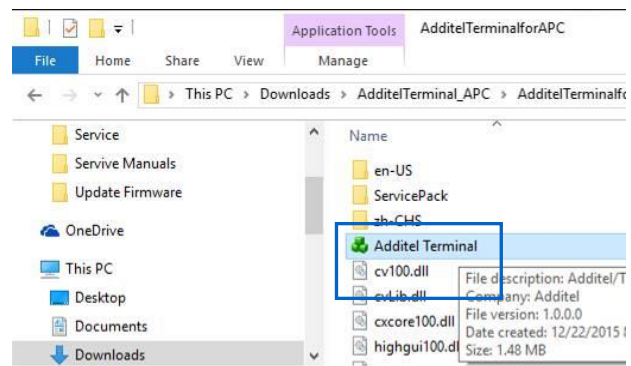
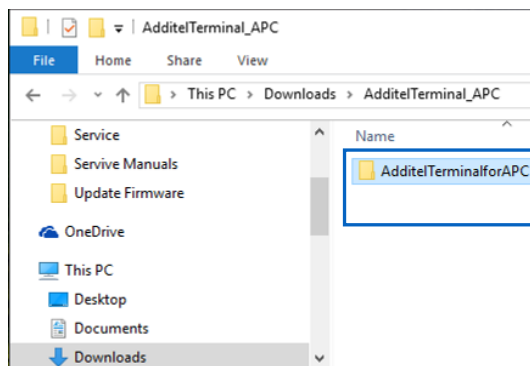
4. You have downloaded a zip file. We need to extract it before running the update.  
When you open the file, click the 'Extract' Menu, and then click 'Extract All'.



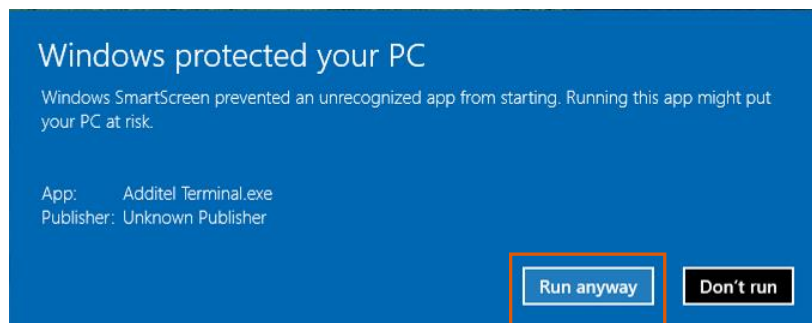
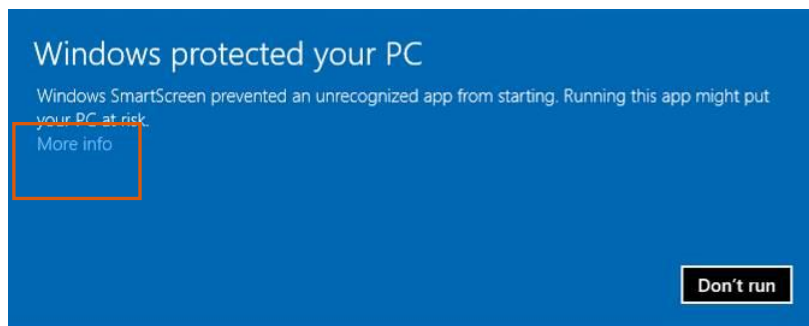
5. Next, you should see the window below. Click 'Extract'.



6. The file was just extracted! Now let's run the firmware update. In the newly extracted file, there should be a folder. Double click on it. Next, you will see a list of files including a program called 'Additel Terminal'. Double click on it to run it.



7. If you are using Windows 10, you may see the blue 'Windows Smart Screen' popup (shown below). First, you should click 'More Info'. Then click 'Run Anyway' to allow Additel Terminal to run.

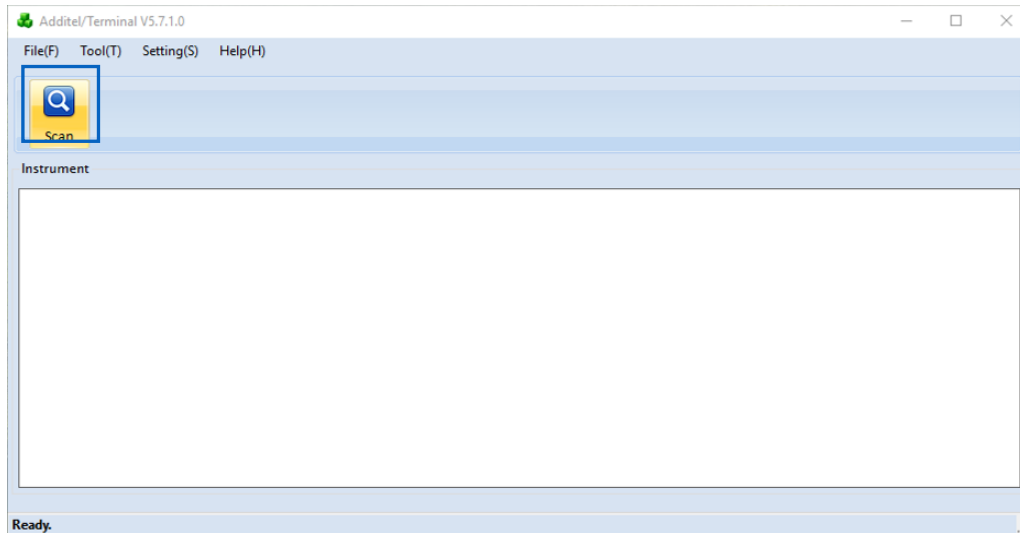


8. You've completed the setup! Next we will perform the firmware update.

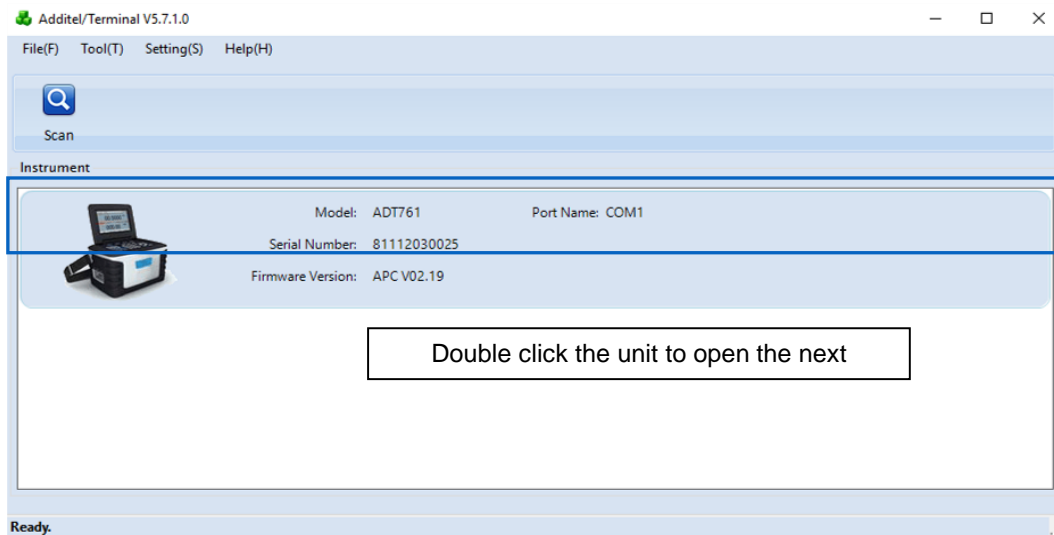


## Performing the Firmware Update

1. Once the program has opened, click Scan.



2. Your unit should appear on the screen. Double click on it. If your unit didn't appear, check that your cable is firmly connected and click scan again. If that doesn't fix the problem, email us or give us a call.



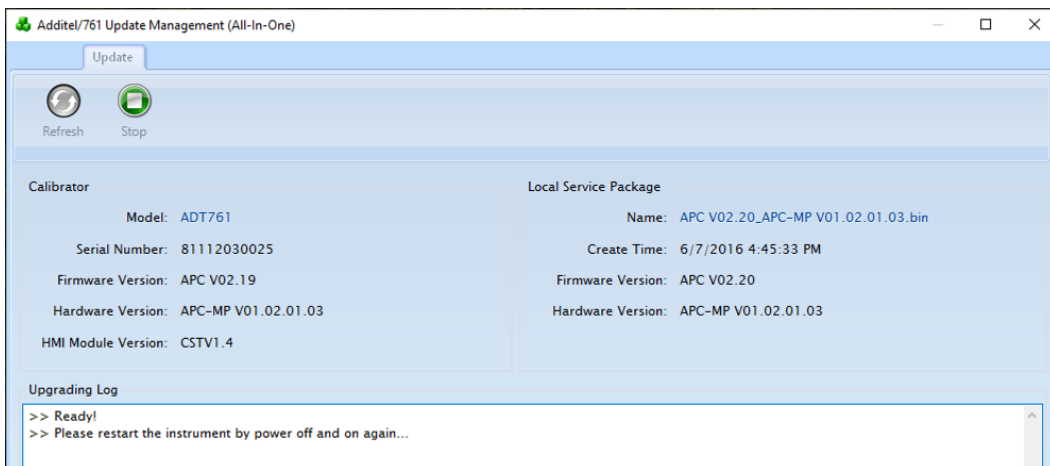


Additel Corporation  
2900 Saturn Street #B  
Brea, CA 92821, USA  
Tel: (714) 998-6899  
Fax: (714) 998-6999

3. Make sure the unit is securely connected to the computer through the RS232 cable **before you start the firmware update**. If it disconnects during the update process, problems may occur.
4. Click the Load Button.



5. Follow the instructions the program gives you (such as restarting the unit). Your unit may turn on and off several times while the update is being performed. When the program is finished running, you will be notified that the update is complete.







Additel Corporation  
2900 Saturn Street #B  
Brea, CA 92821, USA  
Tel: (714) 998-6899  
Fax: (714) 998-6999

---

## Contact Us

### **Got any questions? Give us a call!**

If you have any questions or problems while updating your firmware, please feel free to send us an email or give us a call. We are happy to help you.

You can reach us at (714) 998-6899 or at [service@additel.com](mailto:service@additel.com).